

# At the Summit

the e-zine of Summits Wayside Tavern



5 July, 2005

## PINT NIGHTS

Pint Nights are held on the days below from 7-9 pm at all locations. Drink a pint and keep the glass! (while supplies last!)

- 07/09 Widmere Hefe
- 07/16 Kirin
- 07/23 Bud/Bud Light
- 07/30 Fosters
- 08/06 Sierra Nevada
- 08/13 TBA
- 08/20 Lindemans

## Summits U!

### Beer Tasting Time!

Summits University July session will take place on:

- Mon., July 11 7:00 pm  
Cumming
- Tues., July 12 7:00 pm  
Snellville
- Wed., July 13 7:00 pm  
Sandy Springs

Choices include: Bridgeport IPA, Suffolk Ale, Butte Creek, Tupper's Hop Pocket, and Mount Shasta. The cost of the tasting session is \$10.00 for Passport Club members and \$15.00 for non-passport club members. Hint.... The cost of joining the Summits Passport Club is a mere \$2 donation to Habitat for Humanity! Makes sense to join! Seats will sell out quickly so sign up today!



## A View from the Summit

### Oskar Blues - Great Beer in a Can!

*Oskar Blues Brewery*

Great beer in a can? Thanks to the grinning rulebreakers of Oskar Blues Brewery (in tiny Lyons, Colorado) "delicious canned beer" is no oxymoron.

Two years ago, Oskar Blues founder Dale Katechis launched his Canned Beer Apocalypse, and his scrappy little micro-brewery became the first in the US to brew and can its own beer. The company's rich, muscular, hand-canned beers have now changed the way beer fiends view canned beer.



Dale's Pale Ale is assertive but elegantly balanced beer brewed with ridiculous amounts of European malts and American hops. It features a copper color, a wallop of hop aromas, a rich middle of malts and hops, and a bracing finish. It has 65 International Bittering Units and is 6.5% alcohol by volume. Dale's Pale Ale's numerous honors include "Top Industry Story of the Year" from Celebrator Beer News, and it was just deemed one of the top five American Pale Ales by the reviewers at Ratebeer.com .

Old Chub is a luscious, semi-sweet Scottish-style ale brewed with absurd amounts of crystal and chocolate malts, and a dash of beechwood-smoked malt. The cola-colored wonder features a tawny head, creamy mouthfeel and rich flavors of caramel, chocolate and smoked grains. It is 8% alcohol by volume and has won rave reviews from the nation's beers experts and consumers. Old Chub was recently the highest rated Scottish ale at Ratebeer.com.

Why cans? "Cans eliminate light damage and hold far (...continued on page 2)

## Summit's Beer Offerings



### Snellville

- Saison du Pont
- Carlsberg
- Brooklyn Scottish Ale
- Sierra Nevada Summer
- Sweetwater Summer
- Sam Adams Summer

### Sandy Springs

- Wexford
- Hennepin Saison
- Monks Café
- Carlsberg
- Brooklyn Scottish Ale
- Saison du Pont

### Cumming

- New River Pale Ale
- Sierra Nevada IPA
- Fly'g Dog Scottish Porter
- Brook. Summer Scorcher
- Carlsberg
- Brooklyn Scottish

Visit us on the web at [www.summits-online.com](http://www.summits-online.com)



"At the Summit - the e-zine of Summits Wayside Tavern" is published weekly by Summits Wayside Tavern®, a restaurant chain in the southeastern US, head-quartered in Snellville, Georgia serving quality food and beverages.

**Publisher:** Andy Klubock  
**Editor in Chief:** Jan Smith  
**Design:** Cindy Svec, Relevant Arts

"At the Summit" is free to anyone who subscribes to our mailing list at:

[summits-online.com/maillist.html](http://summits-online.com/maillist.html)

Anyone wishing to be unsubscribed from the newsletter may do so via our website:

[summits-online.com/maillist.html](http://summits-online.com/maillist.html)

Articles, artwork, and other materials are copyrighted by their respective authors or by Summits Wayside Tavern®. All rights reserved.

## Find your Summits!

### Locations

Summits Wayside Tavern® - Sandy Springs  
5830 Roswell Road  
Sandy Springs, GA 30328  
Phone: 404-257-0735  
Fax: 404-257-1298

[summits-online.com/sandysprings/](http://summits-online.com/sandysprings/)

Summits Wayside Tavern® - Snellville  
3334 Stone Mtn. Hwy. (Hwy 78)  
Snellville, GA 30078  
Phone: 770-736-1333  
Fax: 770-736-0041

[summits-online.com/snellville/](http://summits-online.com/snellville/)

Summits Wayside Tavern® - Cumming  
525 Lake Center Pkwy.  
Cumming, GA 30040-2752  
Phone: 770-886-4374  
Fax: 770-886-4376

[summits-online.com/cumming/](http://summits-online.com/cumming/)

## Beer in a Can... (continued from page 1)

less oxygen than bottles," Katechis says, "so our beer stays fresher longer. Cans are also less fuel-consuming to ship, easier to recycle, and make it so much easier to enjoy great beer outdoors."

"Plus," Katechis adds, "we love the way people's jaws drop after they try our canned gonzo beers. They can't believe beer this good comes from a can. It's like hearing Aretha Franklin's voice come out of Ashlee Simpson's mouth."

Find these trailblazing beers in cans and on draft at Summit's Wayside Tavern, and at beer stores across Georgia. Get details on Oskar Blues Brewery at [www.oskarblues.com](http://www.oskarblues.com).

**Editor's Note:** Each week, we'll bring you a column featuring a thought, story, or even prose by your favorite people at Summits! And don't forget, you too can be published! Contact [snellville@summitsonline.com](mailto:snellville@summitsonline.com) for details!

## Summits Gear - Available At Any Summits!

### Shortsleeve T-shirt

black \$14.99  
gray \$14.99

### Longsleeve T-shirt

black \$16.99  
gray \$16.99

### Hats

khaki \$14.99

### Polo Shirts short

black \$26.99  
green \$26.99  
burgundy \$26.99

### Polo shirts long

black \$29.99  
green \$29.99

### Denim shirts

denim \$33.99

### Fleece Pullovers

black \$39.99

### Jackets

black \$200.00

## Beer Spotlight

### Butte Creek Roland's Red

#### GOLD MEDAL WINNER 1997 CA Brewers Festival

A full flavored, hoppy rendition of a traditional English ale. This big, complex beer is a sure delight for the most hop-headed of specialty beer connoisseurs.

### Butte Creek Specialty Beers

This was among the first few beers we ever produced, so it can definitely be called our specialty. Brewed with the finest ingredients available, this beer represents old world brewing philosophies implemented successfully in a modern brewery.

<http://www.buttecreek.com/Specialty.html>



## Cooking With Beer!

### Poached Pears with a White Mascarpone Filling and Boon Framboise Syrup

Ingredients:

- 4 large pears, peeled and cored
- 1/4 cup sugar
- 2 bottles Boon Framboise
- 2 cloves
- 1/2 vanilla bean
- 1/2 cinnamon stick
- 1 tsp arrowroot, dissolved in 2 ounces Chambord liqueur
- 4 ounces white chocolate
- 8 ounce Mascarpone cheese
- mint sprig

To poach pears: Place peeled and cored pears in a pot. Top with the Framboise beer. Add vanilla bean, sugar, cloves and cinnamon stick and simmer pears for approximately 10-15 minutes or until the fruit is fork-tender. Remove the pears carefully and chill.

To prepare syrup: Strain liquid and return to a medium flame and reduce to 1 cup. Add arrowroot and chambord mixture to boiling beer reduction, whisking constantly until thick.

To prepare filling: Melt white chocolate over double boiler until smooth. Chill for 3-5

minutes and whip with mascarpone cheese.

To present: Place white chocolate mascarpone filling in a pastry bag, fill pears to top. Place mint sprig on top and serve on a cold plate. Drizzle syrup over pear and sprinkle plate with confectioners' sugar. Garnish with fresh raspberries. Serve with a chilled Boon Framboise in a champagne flute.

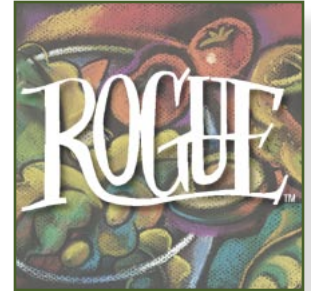
[http://www.belgianexperts.com/recipes/vbdw\\_recipes.php?signaturerecipe=poachpear.xml](http://www.belgianexperts.com/recipes/vbdw_recipes.php?signaturerecipe=poachpear.xml)



## ROGUE 15!!!!

### Rogue 15th

This month offers "Charlie 1981". This brew is an unfiltered strong ale, that exhibits massive bitterness and a firm malt background. Hedonistic! It is brewed using Pale malt, Munich and Crystal 40 malts, Horizon, Sterling and Amarillo hops.



See you on the 15th!

## Beer Connoisseur

### Tuppers Hop Pocket Ale:

Bob and Ellie Tupper (of WWashington DC's Bricks Keller beer tasting fame) in conjunction with Ron Barchet and John Mallett (former brewmaster sat Old Dominion Brewing Company) designed this beer at the Tuppers' dining room table by tasting a table full of beers. Tupper's Hop Pocket is a full bodied, very hoppy beer at 60 IBUs. It is dry hopped with whole leaf Mt Hood and Cascade hops and krausened (fermented) in the keg and the bottle. Michael Jackson mentioned it as one of the top ten beers in the US in the July 2002 issue of American Heritage. abv 6%

Tuppers' Hop Pocket Pils was ranked by Michael Jackson as one of the top 10 beers in the US in the July 2002 issue of American Heritage, as well. It is based on the keller or cellar style. This style combines the appetizing bitterness of a pilsner with the easy to drink smoothness of an unfiltered beer. Many years ago, Northern Bavarian German breweries aged their beers in "kellers" or cellars that were usually caves dug into the side of a hill. This beer is made via a complex hopping schedule which includes dry hopping for weeks over whole leaf Saaz and Mt Hood hops. The pils was a Great American Beer Festival gold medal winner in the German Pilsner category in 2001. abv 5%

<http://www.olddominion.com/pg/ales>



## Spotlight on Food

Try our low-fat Bison Sandwich!

The Great Bison Divide Sandwich is freshly ground grain fed North Dakota bison burger topped with sautéed mushrooms, Vidalia onions, lettuce, tomato, and dijon mustard. This sandwich is served on a freshly baked 5 grain bread with a side of brown rice!

For a full look at our menu, click on [www.summits-online.com](http://www.summits-online.com) and let your food adventure begin.



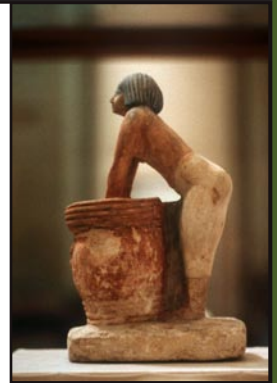
## Did You Know?

In ancient Babylon, the bride's father would supply his son-in-law with all the mead (fermented honey beverage) he could drink for a month after the wedding. Because their calendar was lunar or moon-based, this period of free mead was called the "honey month," or what we now call the "honeymoon."

Before thermometers were invented, brewers would dip a thumb or finger into the liquid to determine the ideal temperature, neither too hot nor too cold, for adding yeast. From this we get the phrase "rule of thumb."

All taken from-

<http://www2.potsdam.edu/alcohol-info/FunFacts/AlcoholTrivia.html>



## Quote of the Week

*Always do sober what you said you'd do drunk. That will teach you to keep your mouth shut.*

- Ernest Hemmingway

## Your Weekly Summits Calendar

Sunday	Monday	Tuesday	Wednesday	Thursday	Friday	Saturday
3	4	5	6	7	8	7-9p 9 WidmERE Hefe
	SN Trivia 7:30p		C Trivia 8p double!		C Trivia 9p SN Trivia 10p SS Trivia 10p	SS Trivia 9p
10	11 Summits U 7pm Cumming	12 Summits U 7pm Snellville	13 Summits U 7pm Sandy Springs	14	15 ROGUE 15! C Trivia 9p SN Trivia 10p SS Trivia 10p	7-9p 16 Kirin
	SN Trivia 7:30p		C Trivia 8p double!			SS Trivia 9p
17	18	19	20	21	22	7-9p 23 Bud/Bud Light
	SN Trivia 7:30p		C Trivia 8p double!		C Trivia 9p SN Trivia 10p SS Trivia 10p	SS Trivia 9p
24	25	26	27	28	29	7-9p 30 Fosters
	SN Trivia 7:30p		C Trivia 8p double!		C Trivia 9p SN Trivia 10p SS Trivia 10p	SS Trivia 9p