

At the Summit

the e-zine of Summits Wayside Tavern



14 June, 2004

PINT NIGHTS

Weekly Pint Nights are held on Saturday Nights at all Locations.

Drink a pint and keep the glass! 7-9 pm (while supplies last!)

6/19 LaBatt's
6/26 Coors
7/3 Sam Adams
7/10 John Courage
7/17 Rogue Amer. Amber
7/24 Haacker Pschorr
7/31 Hoegaarden
8/7 Dogwood Summer
8/14 PBR

Beers!

Snellville

Sam Adams Summer
Anchor Summer
Carolina Blonde
Thomas Creek Van. Cr'm
Sierra Nev. Summerfest
RedHook Summer
Dogwood Summer
Youngs Dble Chc. Stout

Sandy Springs

Youngs Dble Chc. Stout
Rolling Rock Gr. Light
Anchor Summer
Sam Adams Summer
Dogwood Spring
Terrapin Xtr.e Cream Ale
Michelob Amber Bock
Edison Light

Cumming

Sam Adams Summer
Anchor Summer
Rogue Yellow Snow
Thomas Creek Van. Cr'm
Flying Dog Heller Hound
Spring Bock
Dogwood Summer
Youngs Dble Chc. Stout

A View from the Summit

"Are You a Dogaholic?"

Kay-C - Manager - Snellville

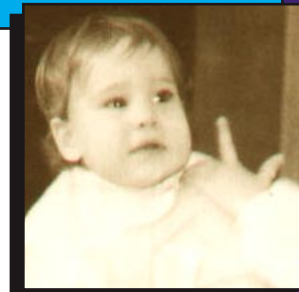
Are You a Dogaholic?

I would like to welcome all of you to this months meeting of dogaholics anonymous. Some of you are here tonight because a friend or relative brought you here. You may be sitting here thinking that you are ok and that you really don't need any help. It is not easy to admit that you are a dogaholic and it is even harder to bring yourself to a DAA meeting for help. DAA is here to assist you.

I have some questions to ask, if you answer YES to more than three of the following, you have come to the right place.

- Can you say "bitch" in public without blushing?
- Do you drive a station wagon, van or 4x4 when everyone else drives a real car?
- Do you have more than one car? One for you and one for the dogs?
- Do you spend your vacation and holidays going to shows, specialties and seminars when everyone else goes on a cruise?
- If you go overseas, is it to London in March to attend Crufts?
- Do you discuss things at the dinner table that would make most doctors leave in disgust?
- Do you consider formal wear to be clean jeans and freshly washed tennis shoes?
- Is your interior decorator R.C. Steele?
- Was your furniture and carpeting chosen to match your dogs?
- Are your end tables really dog crates with tablecloths thrown over them?
- Do you know the meaning of CD, CDX, UD, CGC, HIC, WC, JH, MH, CH and OTCH?
- Is your mail made up of primarily dog catalogs, dog magazines and premium lists?
- Do you get up before dawn to go to training classes? Dog shows? Seminars?

(...continued on page 2)



Mark Your Calendars!!!

Rogue "15" Comes to Summits

To celebrate its 15th anniversary, Rogue Brewery has been brewing a special beer for release on the 15th of every month.

A special Anniversary keg of Rogue beer will be tapped on the 15th of every month and sold ONLY on that day. Every month we will feature a different special anniversary Rogue Brew.

Only select establishments across the country have been invited to join this special Rogue celebration - so join the fun at Summits Wayside Tavern!

June 15, 2004: Rogue Integrity IPA





"At the Summit - the e-zine of Summits Wayside Tavern" is published weekly by Summits Wayside Tavern®, a restaurant chain in the southeastern US, head-quartered in Snellville, Georgia serving quality food and beverages.

Publisher: Andy Klubock

Editor in Chief: Jan Sherrer

Design: Cindy Svec, Relevant Arts

"At the Summit" is free to anyone who subscribes to our mailing list at:

summits-online.com/maillist.html

Anyone wishing to be unsubscribed from the newsletter may do so via our website:

summits-online.com/maillist.html

Articles, artwork, and other materials are copyrighted by their respective authors or by Summits Wayside Tavern®. All rights reserved.

Find your Summits!

Locations

Summits Wayside Tavern® - Sandy Springs

5830 Roswell Road
Sandy Springs, GA 30328
Phone: 404-257-0735
Fax: 404-257-1298

summits-online.com/sandysprings/

Summits Wayside Tavern® - Snellville

3334 Stone Mtn. Hwy. (Hwy 78)
Snellville, GA 30078
Phone: 770-736-1333
Fax: 770-736-0041

summits-online.com/snellville/

Summits Wayside Tavern® - Cumming

525 Lake Center Pkwy.
Cumming, GA 30040-2752
Phone: 770-886-4374
Fax: 770-886-4376

summits-online.com/cumming/

"Are you a dogaholic?" (conti. from page 1)

- If you do have dresses, do they all have pockets?
- Do those pockets often contain freeze dried liver, rollover or squeaky toys?
- When you meet a new person do you always ask them what kind of dog they have and pity them if they don't have one?
- Do you remember the name of their dog sooner than you remember their name?
- Do you find non dog people boring?
- Do you subscribe to an internet dog mailing list?????

If you answered YES to one of the above, there is still hope.

If you answered YES to two, you are in serious trouble.

If you answered YES to three or more, you have come to the right place.

My advice to all of you with three or more YES's is to sit back and smile, turn to the person next to you and know that your life will always be filled with good friends and good dogs and it will never be boring!

-- Author Unknown



Editor's Note: Each week, we'll bring you a column featuring a thought, story, or even prose by your favorite people at Summits! And don't forget, you too can be published! Contact snellville@summitsonline.com for details!

Get Ready, Get Set - Do Peachtree with Summits!



Join the Summits Race Team at the Peachtree Road Race on July 4th! Ride the Summits bus to the Peachtree Road Race! Summits has rented a bus to shuttle our team between our Sandy Springs location and the Peachtree Road Race location.

BOTH RUNNERS AND SPECTATORS WELCOME!

This event is open to the first 50 people to sign up! Passport Club members get a discount on the registration. And all Team Members get the shirt!

Ask your friendly server for details on how to sign up!

Beer Spotlight

Original Coors

The beer Adolph Coors first brewed in 1874. Brewed in the Rockies for a uniquely crisp, clean and drinkable "Mile High Taste." Gold medalist (American premium lager) at 1996 Great American Beer Festival(r). A premium beer with 142 calories per 12-ounce serving and 5.0% alcohol by volume.

<http://www.coors.com/brews/originalCoors.asp>



Cooking With Beer!

Sausages with Mashed Potatoes, Beer and Onion Gravy and Mustard

Ingredients

8 meaty pork sausages
English mustard to serve
For the gravy:
700g/1 1/2 lb onions, sliced thinly
pinch sugar
2 tbsp sunflower oil
25g/1oz butter
1 tsp plain flour
600ml/1 pint brown ale
600ml/1 pint fresh beef stock
1/2 star anise
2 cloves
2 fresh bayleaves
For the mashed potatoes:
900g/2lb floury main crop potatoes,
peeled and cut into chunks
55g/2oz butter
2-3 tbsp milk
salt and freshly ground black pepper



Method

1. To make the beer and onion gravy, heat the oil and the butter in a large, heavy based saucepan.
2. Add the onions and sugar and cook over a low heat for 45 minutes, stirring now and then, until soft and richly caramelised.
3. Stir in the flour and cook for 1 minute.
4. Stir in the beer, beef stock, star anise, cloves and bayleaves and boil vigorously until reduced to a rich, glossy sauce - about 20 minutes in a large sauté pan.
5. Remove the star anise, bayleaves and cloves (if you can find them) from the gravy and season to taste with some salt and pepper.
6. For the sausages and mashed potato, cook the potatoes in boiling salted water for 20 minutes until soft.
7. Then after about 10 minutes, heat the oil for the sausages in a large frying pan. Add the sausages and fry them over a medium heat for 8-10 minutes, turning now and then, until nicely browned and cooked through.
8. Drain the potatoes and mash until smooth - a potato ricer does this really well. Beat in the butter with some seasoning and enough milk to make a smooth, creamy mash.
9. Spoon the mashed potatoes onto warmed plates and rest the sausages alongside. Pour over some of the gravy and serve with a good spoonful of English mustard.

http://www.bbc.co.uk/food/recipes/database/sausageswithmashedpo_757.shtml

The Beer Connoisseur

Coming soon to a Summits near you....

Old Foghorn® Barleywine Style Ale is brewed strictly according to traditional brewing methods, using only natural ingredients — water, malted barley, fresh whole hops and yeast. Old Foghorn is based on traditional English barley wines.

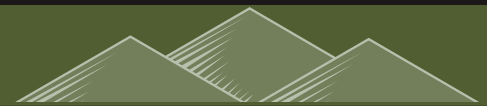
Old Foghorn is highly hopped, using only Cascade hops. It is fermented with a true top-fermenting ale yeast. Carbonation is produced by an entirely natural process called "bunging," which produces champagne-like bubbles. Our barley wine ale is dry-hopped with additional Cascade hops while it ages in our cellars. Old Foghorn ages for over six months.

Because of the high original gravity, the yeast is unable to ferment all of the sugars. As a result, barley wine is high in alcohol, and is slightly sweet, due to the residual sugars. Old Foghorn also has a pleasant hop bitterness, due to the large quantity of hops used during brewing, and a unique hop aroma due to the dry-hopping and aging.

<http://www.anchorbrewing.com/beers/oldfoghorn.htm>



7 oz bottle



Did you know?

The fifth century Irish Saint Bridget allegedly performed the miracle of turning water into beer.

In 1888, German beer consumers in Munich staged the "Battle of Salvator" over sharp beer price increases.

SOURCE: Pete's Wicked

The Finnish national epic poem, the Kalevala, includes an early ode to beer in Verse XX: "Sing the songs of beer immortal!"

SOURCE: The Kalevala

More words of beer wisdom at:

<http://www.brewreview.com/brewreview/marginalia/trivia.asp>

The Giant Mountains

Giant mountains are the highest and most famous mountains in the Czech republic. They are situated in nord-east Bohemia on the border between Czech republic and Poland. Czech part of Giant mountains is more extensive and more terrain then polish. On the border occurs the highest mountain Snežka (1602 m). The whole area of Giant mountains has been proclaimed of National Park, thanks to its natural treasure.

On west rise the Giant mountains by Novosvetské saddle and they are creted by two ridges. First of these is the Hranicní ridge. Alogn its pivot goes the state border and there are situated the main part of highest Giant mountains´hills. Second is the Czech ridge. The border between eatern and western Giant mountains is created by the valley of river Labe (Elbe) near the Špindleruv Mlýn.

http://www.ceskehory.cz/krkonose/default_gb.asp?menu=3&ontent=document&ID=3

Quote of the Week

"When we drink, we get drunk. When we get drunk, we fall asleep. When we fall asleep, we commit no sin. When we commit no sin, we go to heaven.

Sooooo, let's all get drunk and go to heaven!" -- Brian O'Rourke

Your Weekly Summits Calendar

Sunday	Monday	Tuesday	Wednesday	Thursday	Friday	Saturday
13	14	15 ROGUE 15!	16	17	18	7-9p 19 LaBatt's
	SN Trivia 7:30p	SS Trivia 8p	C Trivia 8p double!		C Karaoke 10p SN Trivia 10p SS Trivia 10p	SS Trivia 9p
20	21	22	23	24	25	7-9p 26 Coors
	SN Trivia 7:30p	SS Trivia 8p	C Trivia 8p double!		C Karaoke 10p SN Trivia 10p SS Trivia 10p	SS Trivia 9p
27	28	29	30	July 1	2	7-9p 3 Sam Adams
	SN Trivia 7:30p	SS Trivia 8p	C Trivia 8p double!		C Karaoke 10p SN Trivia 10p SS Trivia 10p	SS Trivia 9p
4 Peachtree Road Race Join Summits!	5	6	7	8	9	7-9p 10 John Courage
	SN Trivia 7:30p	SS Trivia 8p	C Trivia 8p double!		C Karaoke 10p SN Trivia 10p SS Trivia 10p	SS Trivia 9p